





Conveniently located, this splendid townhouse, built in approximately 1870, offers historical Victorian elegance with modern convenience. With five generously sized bedrooms and three inviting reception rooms, this property is designed for both comfort and functionality, making it the ideal family home.

The spacious kitchen diner is perfect for family gatherings and entertaining guests, whilst the two well-appointed bathrooms ensure that morning routines run smoothly, catering to the needs of a busy household. The townhouse boasts ample parking with residential parking to the front and a double garage to the rear, a rare find in such a central desirable location.

A standout feature of this property is its beautiful south-facing patio garden, which provides a delightful sun trap, perfect for enjoying sunny afternoons and BBQ's. The garden exudes a charming country cottage feel, offering a tranquil retreat from the hustle and bustle of daily life.

Situated just a few minutes' walk from the town center, this home is ideally located near supermarket and town center shops and restaurants not to mention highly regarded schools. The combination of its prime location, spacious living areas, and delightful outdoor space makes this townhouse a truly exceptional opportunity. Whether you are looking for a family home or a property with character, this residence is sure to impress.







- Beautiful Victorian Town House
- Town center location with amenities on hand, close to shops, restaurants, schools and parks.
- Resident parking to the front, Double garage off street parking to rear
- 5 bedrooms, 2 reception rooms and a family kitchen / diner
- Country style patio garden, South facing sun trap

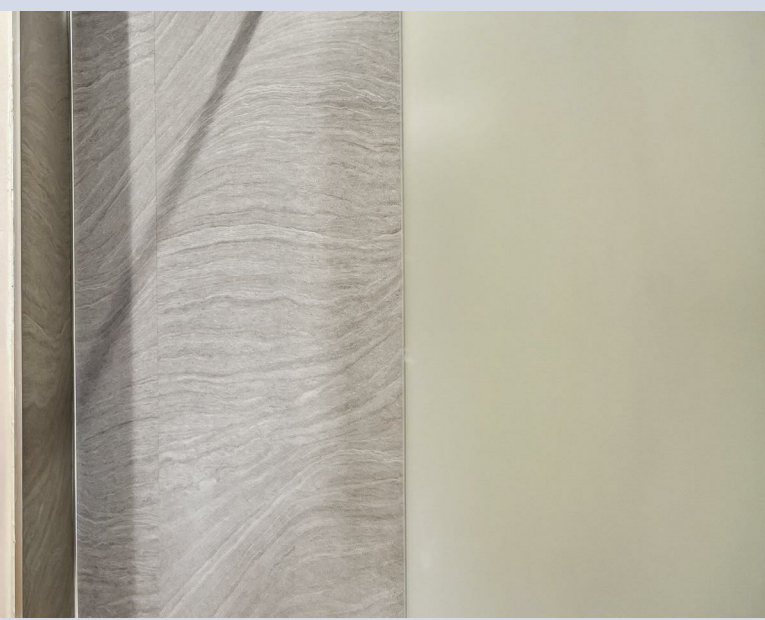
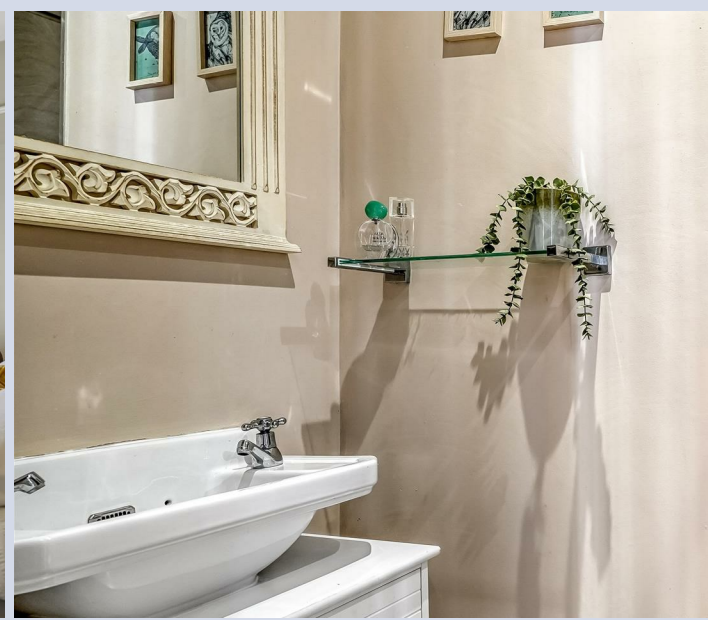
#### GENERAL INFORMATION:

Tenure: Freehold

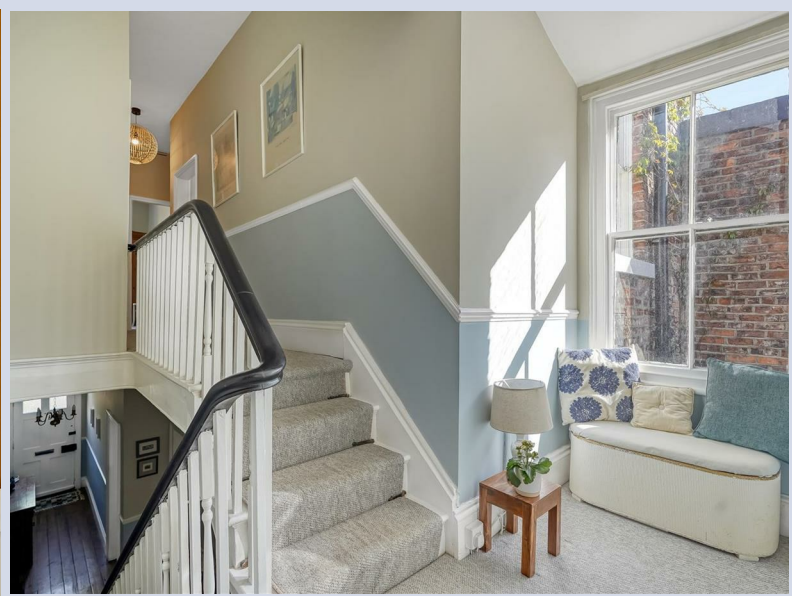
Services: Gas central heating, mains electric, water and drainage.

Local Authority: Darlington Borough Council (Tax Banding C)















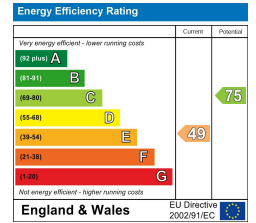






HAREWOOD TERRACE, DARLINGTON, DL3 7HX.

Whilst every attempt has been made to ensure the accuracy of the floorplan contained here, measurements of doors, windows, rooms and any other items are approximate and no responsibility is taken for any error, omission or mis-statement. This plan is for illustrative purposes only and should be used as such by any prospective purchaser. The services, systems and appliances shown have not been tested and no guarantee as to their operability or efficiency can be given.  
Made with Metropix ©2025



**We can search 1,000s of mortgages for you**

It could take just 15 minutes with one of our specialist advisers:  
Call: 01325 380088. Visit: Any of our Offices. Online: [www.mortgageadvicebureau.com/carver](http://www.mortgageadvicebureau.com/carver)



Your home may be repossessed if you do not keep up repayments on your mortgage. There will be a fee for mortgage advice. The actual amount you pay will depend upon your circumstances. The fee is up to 1% but a typical fee is 0.3% of the amount borrowed

MAB 6202



These particulars do not constitute any part of an offer or contract. None of the statements contained in these particulars are to be relied on as statements or representations of fact and any intending purchaser must satisfy himself by inspection or otherwise to the correctness of each of the statements contained in these particulars. The vendor does not make or give, and neither Nick & Gordon Carver Residential or Commercial, Nick & Gordon Carver, nor any person in their employment has any authority to make or give any representation or warranty whatever in relation to this property

**naea**  
**propertymark**  
**PROTECTED**



**14 Duke Street, Darlington**  
**Co Durham, DL3 7AA**  
**01325 357807**  
**[sales@carvergroup.co.uk](mailto:sales@carvergroup.co.uk)**

**63 Dalton Way, Newton Aycliffe**  
**Co Durham DL5 4NB**  
**01325 320676**  
**[aycliffe@carvergroup.co.uk](mailto:aycliffe@carvergroup.co.uk)**

**41 Market Place, Richmond**  
**North Yorkshire, DL10 4QL**  
**01748 825317**  
**[richmond@carvergroup.co.uk](mailto:richmond@carvergroup.co.uk)**

**219 High Street, Northallerton**  
**North Yorkshire DL7 8LW**  
**01609 777710**  
**[northallerton@carvergroup.co.uk](mailto:northallerton@carvergroup.co.uk)**

**[www.carvergroup.co.uk](http://www.carvergroup.co.uk)**